

# ARCHITECTURAL RECORD

## INTHELANDSCAPE

2009 AIA HOUSING  
AND HUD AWARDS

PLUS  
BUILDING TYPES STUDY  
Private Schools





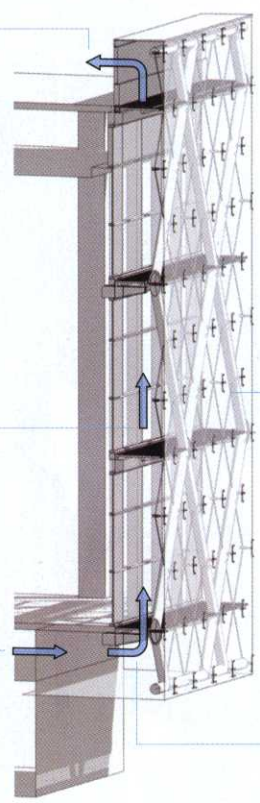
**A double-skinned curtain wall (below) will wrap the patient tower (above) of the Cleveland Clinic's new building in Abu Dhabi. Recovered exhaust air circulating through its roughly 5-foot-wide cavity will help insulate the interior from the harsh desert climate.**



Cavity and building exhaust air mechanically circulated

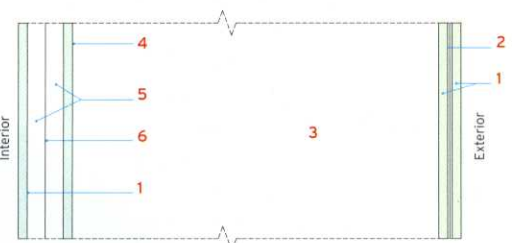
100 percent outside air with run-around heat-recovery system

Interior skin



Exterior skin: diamond-shaped, laminated glass with spider fittings

Building exhaust air precools cavity air



PATIENT TOWER GLAZING DIAGRAM

1. Low-iron glass with antireflective coating
2. Reflective film
3. Five-foot-wide air gap
4. Clear glass with low-E coating
5. Argon-filled 1/2-inch gap
6. Low-E film

